

# Activation of Immune Function May Allow Combination with Standard Therapies

## Case studies of patients who used “BioBran” (rice bran Arabinoxylan compound)

As cancer treatment approaches, surgery, chemotherapy, and radiotherapy are making rapid progress even now but still have limitations. Dr. Masaaki Koshibu, the interviewee in this issue, has worked at the forefront of cancer treatment as a surgeon for a long time. Based on his experience, he emphasizes that taking into account patient’s hope and QOL, utilization of supplements based on scientific evidence is likely to be useful.

“BioBran” sold by Daiwa Pharmaceutical Co., Ltd. (rice bran Arabinoxylan compound) has been shown to activate immune functions, suggesting various kinds of clinical usefulness. Dr. Koshibu explains the approach with “BioBran” and its positioning, using actual case data.



**Dr. Masaaki Koshibu**

**Director of Medical Square Akasaka President of the Japan Cancer Knowledge Promotion Foundation**

Graduated from School of Medicine, Chiba University in 1953. His specialty is gastrointestinal surgery. Held the posts of lecturer at the Second Department of Surgery of Chiba University and director of Nakayama Cancer Research Institute, established the Japan Cancer Knowledge Promotion Foundation in 1962, and established Akasaka Hospital (current Medical Square Akasaka) in 1968. He focuses on the spread of and education for cancer knowledge and life-style related disease control.

### ● “BioBran” in cancer treatment

**Recognized as an anticancer supplement based on scientific evidence in the U.S.**

**-- First of all, how is functional food positioned in cancer treatment?**

Koshiibu: My honest impression is “how different the recognition is between countries!” “BioBran” is widely known and actually used as an anticancer supplement in the U.S., but is used only as a nutritional supplement in Japan, even now.

**-- What caused you to pay attention to “BioBran”?**

Koshiibu: I have performed many operations as a surgeon but surgical therapy is not effective for recurrent cancer. Survival is the pressing want of cancer patients. I felt powerless when I could “do nothing” as a physician for such patients.

I searched for other approaches and noticed functional food. As “BioBran” has been scientifically shown to be useful, I thought that it was worth trying to use it clinically.

**● What clinical cases show**

**Use of “BioBran” in combination with anticancer agents and/or radiation therapy markedly decreased tumor markers**

**-- Do you often recommend “BioBran” to cancer patients?**

Koshiibu: Yes. It is clear that “BioBran” induces apoptosis of cancer cells. I place it at a position near to anticancer agents.

**—Please, talk about cases where you actually used “BioBran.”**

Koshiibu: This chart shows changes in a tumor marker in a patient with progressive breast cancer who underwent a mastectomy (Figure 1). She continued chemotherapy after surgery but experienced low back pain after 2 years. It persisted without improvement. Bone scintigraphy revealed a metastatic focus in the L1 vertebra.

This patient received radiation therapy additional to chemotherapy and also started taking “BioBran.” The tumor marker CA15-3 markedly decreased. Pain disappeared and bone scintigraphy showed disappearance of the accumulation of radioactivity in the metastatic focus. She is in good condition now.

Figure 2 displays changes in tumor markers in another breast cancer patient with lumbar metastasis. In this patient, the tumor markers decreased after chemotherapy and radiation

therapy but increased again. Additional “BioBran” tended to improve the increased tumor markers.

These improvements in the two patients are considered to result from activation of immune functions by “BioBran.” It should be clinically appreciated that the combination between “BioBran” and the standard therapies was effective.

**—“BioBran” has been reported to alleviate adverse effects of chemotherapy and radiation therapy. What do you think about this?**

Koshiibu: Chemotherapy and radiation therapy cause a lot of damage to the body and thus having an appetite is very significant in such a situation. It is very important to maintain a patient’s QOL and help patients keep the will to undergo treatment.

**—Does the effect of “BioBran” differ between types of cancer?**

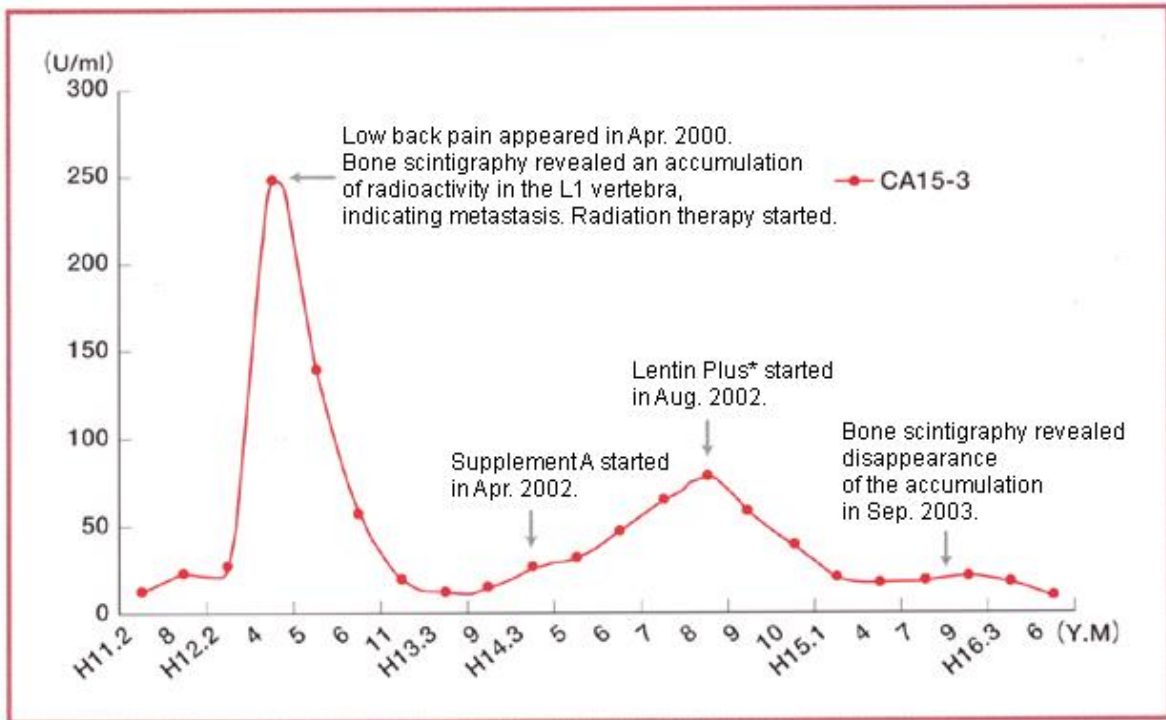
Koshiibu: As “BioBran” has tended to improve breast cancer, I also use it in ovarian cancer patients. Use in other stomach cancer, lung cancer, and gallbladder cancer has just started.

**—What do you think about the possibility of application to diseases other than cancer?**

Koshiibu: Although enough studies are required, I feel that “BioBran” may be effective for diseases other than cancer because it can enhance the immune function by activating NK cells.

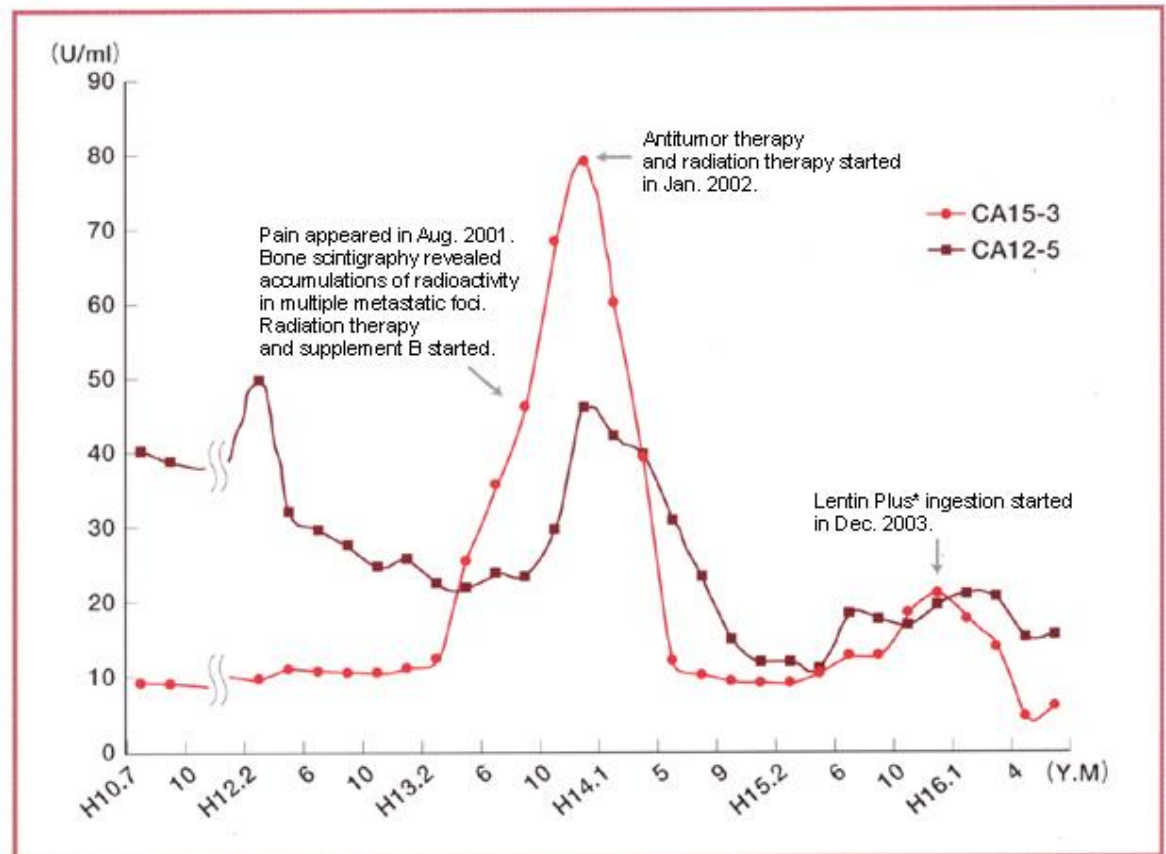
In my experience, patients who continued to take “BioBran” for a long time did not catch colds easily or that even if they caught a cold, it was mild. “BioBran” also improved the depressed state in a patient. The mechanisms of such a variety of actions are unknown now. However, activation of NK cells is expected to play a role.

**Figure 1 Changes in tumor marker (1)**



\* Lentin Plus = "BioBran"

**Figure 2 Changes in tumor markers (2)**



\* Lentin Plus = "BioBran"

● **Future prospect of functional food**

**Confirmation of evidence important for optional therapy to complement the standard therapies**

—**You also serve as the president of the Japan Cancer Knowledge Promotion Foundation. Has there been any change in cancer patient’s consciousness about treatment recently?**

Koshibu: Surgical procedures, chemotherapy, and radiation therapy have been making rapid progress. Many cancer patients have come to feel that it is possible to cure cancer.

—**I think that you are often asked about supplements by patients. Please, tell me points for supplement ingestion.**

Koshibu: If 3-month ingestion achieves no effect, I advise the patient to stop the supplement. I recommend for patients to combine supplements in different classes, which promise improvement through different mechanisms of action.

Patients have to pay treatment expense. As many functional foods are expensive, patients should consider cost-effectiveness.

—**What do you think about the future prospect of functional food in cancer treatment?**

Koshibu: Some types of cancer are still intractable. I think that functional foods will be an important option that complements standard treatment or that promises direct improvement.

In the future, functional food will require accumulation and confirmation of evidence. It is important to fully confirm why the supplement is effective. Even if the supplement is effective for one patient, it will not necessarily be effective for all. I think that supplements should allow many patients to feel improvement and offer hope.

—**Thank you very much.**

For inquiry about “BioBran”:

Daiwa Pharmaceutical Co., Ltd.

Customer Response Center: 0120-797-867

URL: [www.daiwa-pharm.com](http://www.daiwa-pharm.com)

E-mail: [info@daiwa-pharm.com](mailto:info@daiwa-pharm.com)